



ASKING PRICE

£375,000

## THE DETAILS

 2     1     1



The Chapel  
Main Road, Greeba  
£375,000

call in today or visit [www.blackgracecowley.com](http://www.blackgracecowley.com) for more details

e: [peel@blackgracecowley.com](mailto:peel@blackgracecowley.com) | w: [blackgracecowley.com](http://blackgracecowley.com) | t: +44 (0) 1624 845 696

a: 9 Atholl Place, PEEL, Isle of Man, IM5 1HE







PROPERTY DETAILS FOR  
**The Chapel, Greeba**



e: [peel@blackgracecowley.com](mailto:peel@blackgracecowley.com) | w: [blackgracecowley.com](http://blackgracecowley.com) | t: +44 (0) 1624 845 696

a: 9 Atholl Place, PEEL, Isle of Man, IM5 1HE

PROPERTY DETAILS FOR  
**The Chapel, Greeba**



e: [peel@blackgracecowley.com](mailto:peel@blackgracecowley.com) | w: [blackgracecowley.com](http://blackgracecowley.com) | t: +44 (0) 1624 845 696

a: 9 Atholl Place, PEEL, Isle of Man, IM5 1HE







PROPERTY DETAILS FOR  
**The Chapel, Greeba**



e: [peel@blackgracecowley.com](mailto:peel@blackgracecowley.com) | w: [blackgracecowley.com](http://blackgracecowley.com) | t: +44 (0) 1624 845 696

a: 9 Atholl Place, PEEL, Isle of Man, IM5 1HE



## PROPERTY DETAILS FOR The Chapel, Greeba



e: [peel@blackgracecowley.com](mailto:peel@blackgracecowley.com) | w: [blackgracecowley.com](http://blackgracecowley.com) | t: +44 (0) 1624 845 696

a: 9 Atholl Place, PEEL, Isle of Man, IM5 1HE

## THE DESCRIPTION

- Stunning converted former Chapel full of charm and character
- Conveniently located in the central valley in Greeba
- Lounge, Kitchen/Diner, Utility Room
- 2 Bedrooms, Family Bathroom
- Private rear garden with versatile garden pod, off road parking
- Viewings highly recommended
- No onward chain

## THE PROPERTY

Black Grace Cowley are delighted to offer The Chapel to the market, a beautiful converted chapel in Greeba. Situated in the central valley, close to the bus route and only a five minute drive to Peel and 15 minutes to Douglas and the airport in the South.

Entering the property via the uPVC double glazed door into an inner porch with glazed doors leading into the spacious and welcoming entrance hall and a walk-in cloakroom with plenty of storage for coats, shoes and boots. To the left of the front door is a pretty double bedroom and to the right is a family bathroom with separate shower, large bath, vanity sink, WC and heated towel rail. A door at the end of the hallway leads into the lounge with an impressive vaulted ceiling, beams, a feature fireplace with multi-fuel burner, storage cupboard, large picture window overlooking the rear garden and a stunning spiral staircase leading to the gallery above. Through a door off the lounge into the spacious and light galley kitchen with a range of base and wall units, contrasting work-top, one and half sink, electric oven and dishwasher, the dining area features a beautiful exposed stone wall and window archway. A door from the kitchen leads to a generous utility room with plumbing for laundry services and additional storage, a door to the side of the chapel is cleverly hidden by an inventive mobile shelving unit. The impressive spiral staircase leads to the gallery above that looks down onto the lounge area and could be used as a reading area or home office. A door from the gallery leads into the generous and light main bedroom with a charming Juliet balcony providing countryside views towards Greeba Mountain.

The rear garden is accessed from the side of the house where there is off road parking for three cars. There is a substantial and comfortable cabin, currently a home office that is versatile enough to be used as additional living space, yoga studio or hobbies room. The pretty garden is sunny and private with a feature pond and mature shrubs and trees.





PROPERTY DETAILS FOR

## The Chapel, Greeba

Oil fired central heating. uPVC windows and doors. Off road parking. Private drainage. No onward chain.

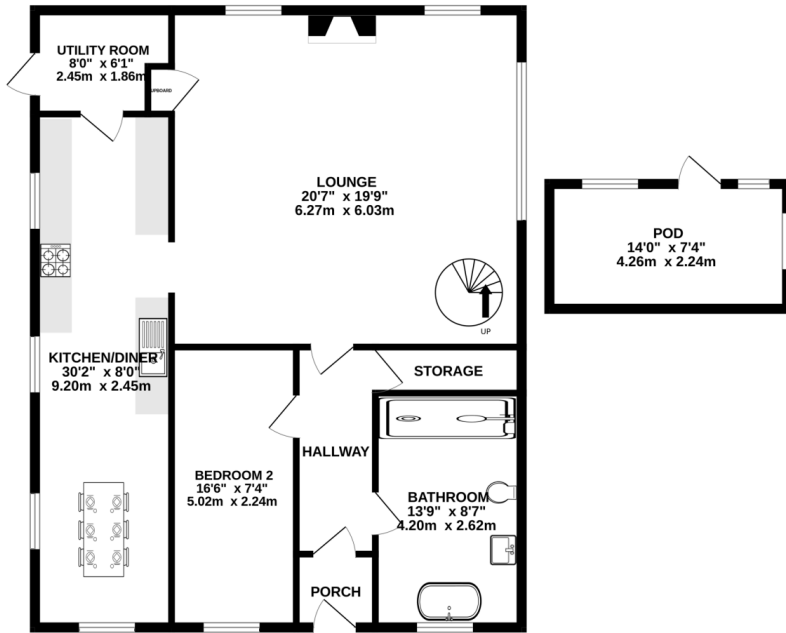
**e:** [peel@blackgracecowley.com](mailto:peel@blackgracecowley.com) | **w:** [blackgracecowley.com](http://blackgracecowley.com) | **t:** +44 (0) 1624 845 696

**a:** 9 Atholl Place, PEEL, Isle of Man, IM5 1HE

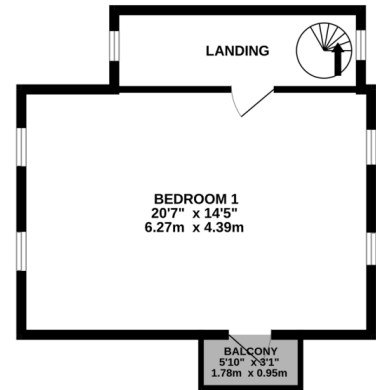


## FLOORPLAN

GROUND FLOOR  
1134 sq.ft. (105.3 sq.m.) approx.



1ST FLOOR  
364 sq.ft. (33.8 sq.m.) approx.



TOTAL FLOOR AREA : 1498 sq.ft. (139.2 sq.m.) approx.

Whilst every attempt has been made to ensure the accuracy of the floorplan contained here, measurements of doors, windows, rooms and any other items are approximate and no responsibility is taken for any error, omission or mis-statement. This plan is for illustrative purposes only and should be used as such by any prospective purchaser. The services, systems and appliances shown have not been tested and no guarantee as to their operability or efficiency can be given.  
Made with Metropix ©2025





## PROPERTY DETAILS FOR The Chapel, Greeba

### Disclaimer

These particulars are for information purposes only and do not constitute or form any contract nor should any statement contained herein be relied upon as a representation of fact.

Neither the vendor nor Black Grace Cowley (the firm), nor any officer or employee of the firm accept liability or responsibility for any statement contained herein.

The vendor does not by these particulars, nor does the firm, nor does any officer or any employee of the firm have any authority to make or give any representation or warranty whatsoever as regards the property or otherwise. It is the sole responsibility of any person interested in the property described in these particulars to make all proper enquiries and searches to verify the description of the property and all other particulars herein.

**e:** [peel@blackgracecowley.com](mailto:peel@blackgracecowley.com) | **w:** [blackgracecowley.com](http://blackgracecowley.com) | **t:** +44 (0) 1624 845 696

**a:** 9 Atholl Place, PEEL, Isle of Man, IM5 1HE